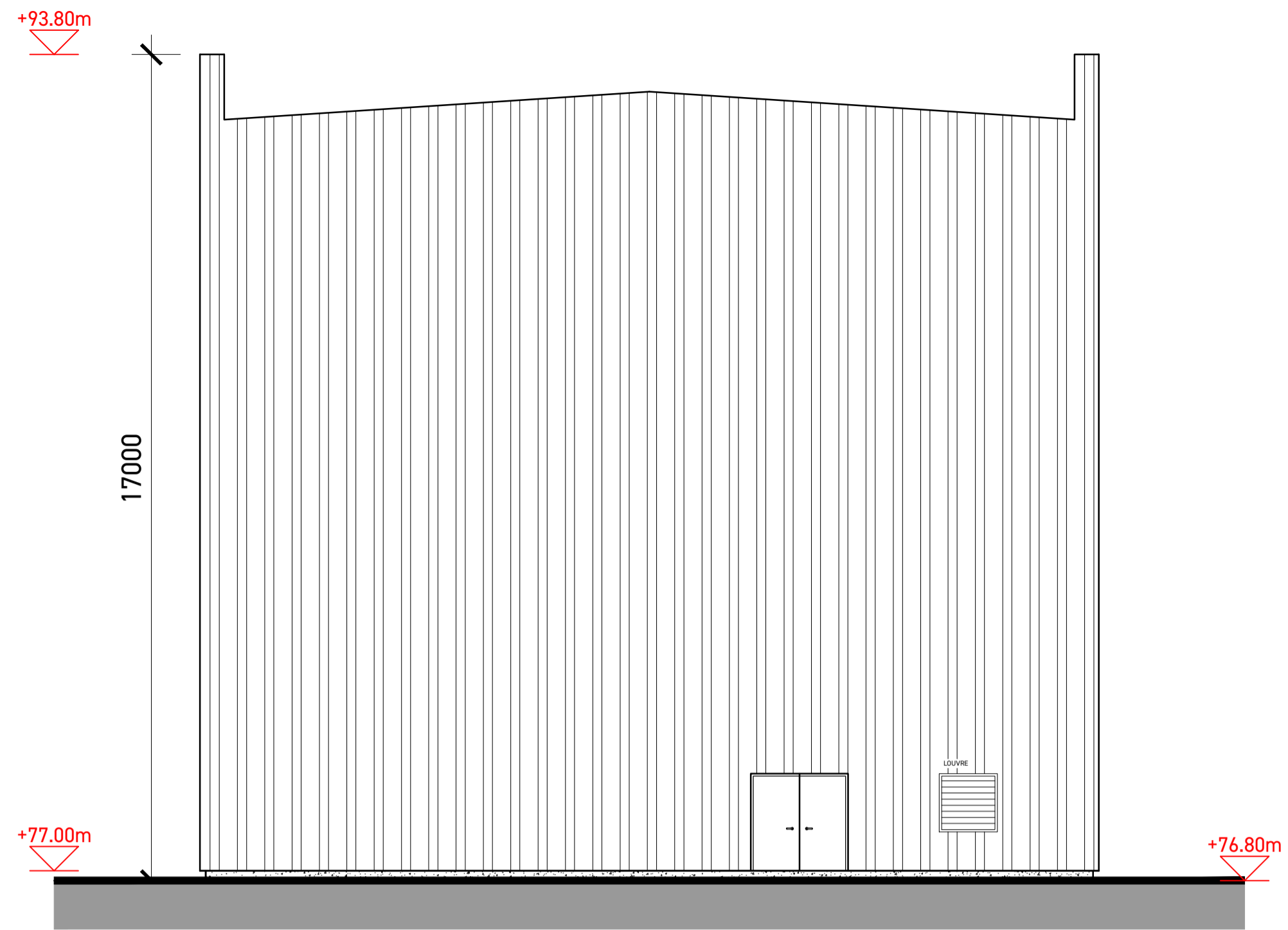
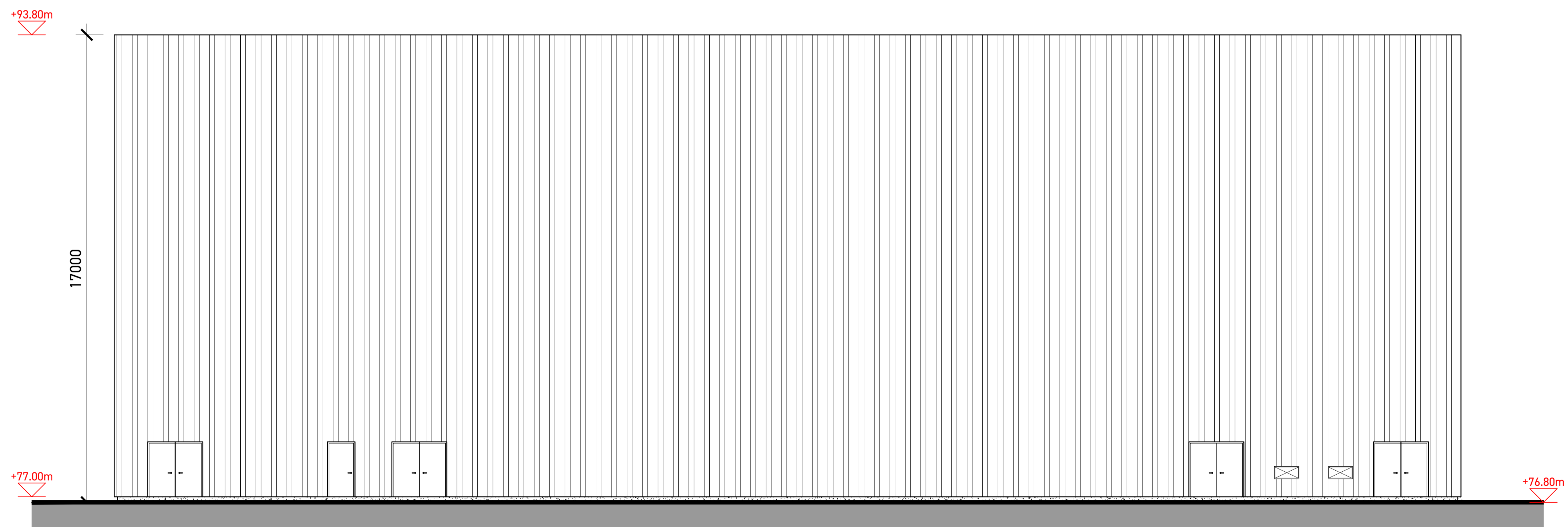


ELEVATION B TO NORTH



ELEVATION C TO SOUTH



ELEVATION D TO EAST

- NOTES -

- POWDER COATED CORRUGATED COMPOSITE WALL & ROOF PANELS
- POWDER COATED BARGE BOARDS, GUTTERS & RAINWATER PIPES
- POWDER COATED LOUVERS (SIZES TO BE DETERMINED)
- POWDER COATED ALUMINUM WINDOWS & EXTERNAL DOORS
- GALVANISED STEEL ROLL SHUTTER DOOR & EMERGENCY EXITS

Rev	Description	Date
-----	-------------	------

PLANNING

Client
Kilshane Energy Ltd

Project
POWER STATION
Kilshane, Dublin 11

Date
December 2025

Scale
1:100 @ A1

Drawing
GIS
ELEVATION B, C & D

Job Nr	Drawing Nr	Rev
165	PL.A.03	

